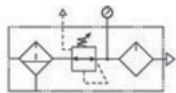




Components

- Filter:** 204-1000/2000
- Regulator:** 104-1000
- Lubricator:** 304-1000/2000
- Nipple:** Zinc Dichromate Coated Steel

Please see individual product page for further details.



Operating Specifications

- Bowl Capacity:** 5 oz. or 8 oz.
- Maximum Pressure Ratings:**
 - Metal Bowl: 250 PSI
 - Polycarbonate Bowl: 150 PSI
- Temperature Ratings:**
 - Metal Bowls: 0-200°F
 - Polycarbonate Bowls: 0-120°F

Features

- Filter, regulator and lubricator consolidated into one assembly
- Polycarbonate or aluminum bowls available
- Manual, float or impulse drains available
- Gauge included
- Tie-rod construction for maximum stability

Ordering Information

213-1000-2

Bowl Capacity	
5 oz.	2
8 oz.	1

Bowl Type	
Polycarbonate	0
Polycarbonate w/ Guard	1
Metal	2
Metal w/ Sight Level	3

Elements	
20 Micron	0
10 Micron	1
3 Micron	2

Pipe Size	
1/4"	2
3/8"	3
1/2"	4

OPTIONS

Anodizing	
None (Standard)	Blank
Blue	A1
Black	A2
Clear	A3
Green	A4
Red	A5
Yellow	A6
Gold	A7
Purple	A8
Drain	
Manual (Standard)	Blank
Impulse	D
Float	F
Seals	
Buna-N (Standard)	Blank
Fluorocarbon	V
Attachment Part	
Bracket	B
Knob	K

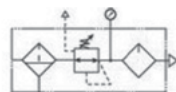
FILTER/REGULATOR/LUBRICATORS: C3-1000/2000



Components

- Filter/Regulator:** C01-1000 /2000
- Lubricator:** 304-1000 /2000
- Nipple:** Zinc Dichromate Coated Steel

Please see individual product pages for further details.



Operating Specifications

- Bowl Capacity:** 5 oz. or 8 oz.
- Maximum Pressure Ratings:**
 - Metal Bowl: 250 PSI
 - Polycarbonate Bowl: 150 PSI
- Temperature Ratings:**
 - Metal Bowls: 0-200°F
 - Polycarbonate Bowls: 0-120°F

Features

- Filter/regulator and lubricator consolidated into one assembly
- Polycarbonate or aluminum bowls available
- Manual, float or impulse drains available
- Gauge included
- 10-130 PSIG spring

Ordering Information

C3-2000-2

Bowl Capacity	
5 oz.	2
8 oz.	1

Bowl Type	
Polycarbonate	0
Polycarbonate w/ Guard	1
Metal	2
Metal w/ Sight Level	3

Elements	
20 Micron	0
10 Micron	1
3 Micron	2

Pipe Size	
1/4"	2
3/8"	3
1/2"	4

OPTIONS

Anodizing	
None (Standard)	Blank
Blue	A1
Black	A2
Clear	A3
Green	A4
Red	A5
Yellow	A6
Gold	A7
Purple	A8
Drain	
Manual (Standard)	Blank
Impulse	D
Float	F
Seals	
Buna-N (Standard)	Blank
Fluorocarbon	V
Attachment Part	
Bracket	B