

<b>213-3000 &amp; B3-3000 Miniature Series</b>	<b>2</b>
<b>213-1000/2000 &amp; C3-1000/2000 Series</b>	<b>3</b>
<b>B3-1000 &amp; FRL-1000 Series</b>	<b>4</b>
<b>213-5000 &amp; 213-4000 Series</b>	<b>5</b>

## Caution

Bowl guards are recommended on all polycarbonate bowl filters!  
All bowl guards are made of heavy-duty stainless steel.

## Warning

Polycarbonate bowls can be damaged and may fail if they are exposed to or come in contact with solvents, strong alkalis, fire resistant and/or synthetic compressor lubricants.

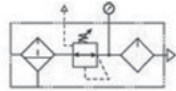
**WARRANTY:** Monnier warrants each product against defects in material and workmanship for a period of one year from the date of manufacture providing its use was in accordance with Monnier recommendations. If the product fails to perform as warranted, Monnier will, at its option, repair or replace the product free of charge. The company will not be liable for incidental or consequential damages. We make no other warranty, expressed or implied, including warranties of merchantability or fitness for a particular purpose.



## Components

- Filter:** 204-3000
- Regulator:** 101-3000
- Lubricator:** 305-3000
- Nipple:** Zinc Dichromate Coated Steel

Please see individual product pages for further details.



## Operating Specifications

- Bowl Capacity:** 1 oz.
- Maximum Pressure Ratings:**
  - Metal Bowl: 250 PSI
  - Polycarbonate Bowl: 150 PSI
- Temperature Ratings:**
  - Metal Bowls: 0-200°F
  - Polycarbonate Bowls: 0-120°F

## Features

- Filter, regulator and lubricator consolidated into one assembly
- Polycarbonate or aluminum bowls available
- Manual or impulse drains available
- Gauge included
- High flow and low flow lubricator options
- 10-130 PSIG spring

## Ordering Information

### 213-3000-2

Bowl Type	
Polycarbonate	0
Polycarbonate w/ Bowl Guard	1
Metal	2

Pipe Size	
1/8"	1
1/4"	2

Lubricator Flow	
High Flow	0
Low Flow	5

Elements	
20 Micron	0
10 Micron	1
3 Micron	2

#### OPTIONS

Anodizing	
None (Standard)	Blank
Blue	A1
Black	A2
Clear	A3
Green	A4
Red	A5
Yellow	A6
Gold	A7
Purple	A8

Drain	
Manual (Standard)	Blank
Impulse	D

Seals	
Buna-N (Standard)	Blank
Fluorocarbon	V

Attachment Part	
Bracket	B

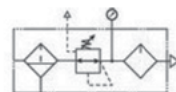
# MINIATURE FILTER/REGULATOR/LUBRICATORS: B3-3000



## Components

- Filter/Regulator:** B01/C01-3000
- Lubricator:** 305-3000
- Nipple:** Zinc Dichromate Coated Steel

Please see individual product pages for further details.



## Operating Specifications

- Bowl Capacity:** 1 oz.
- Maximum Pressure Ratings:**
  - Metal Bowl: 250 PSI
  - Polycarbonate Bowl: 150 PSI
- Temperature Ratings:**
  - Metal Bowls: 0-200°F
  - Polycarbonate Bowls: 0-120°F

## Features

- Filter/regulator and lubricator consolidated into one assembly
- Reduces footprint of air prep assembly
- Polycarbonate or aluminum bonnets available
- Polycarbonate or aluminum bowls available
- Manual or impulse drains available
- Gauge included
- High flow and low flow lubricator options
- 10-130 PSIG spring

## Ordering Information

### B3-3000-2

Bonnet	
Polycarbonate	B
Aluminum	C

Pipe Size	
1/8"	1
1/4"	2

Bowl Type	
Polycarbonate	0
Polycarbonate w/ Bowl Guard	1
Metal	2

Lubricator Flow	
High Flow	0
Low Flow	5

Elements	
20 Micron	0
10 Micron	1
3 Micron	2

#### OPTIONS

Anodizing	
None (Standard)	Blank
Blue	A1
Black	A2
Clear	A3
Green	A4
Red	A5
Yellow	A6
Gold	A7
Purple	A8

Drain	
Manual (Standard)	Blank
Impulse	D

Seals	
Buna-N (Standard)	Blank
Fluorocarbon	V

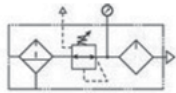
Attachment Part	
Bracket	B
Knob	K



### Components

- Filter:** 204-1000/2000
- Regulator:** 104-1000
- Lubricator:** 304-1000/2000
- Nipple:** Zinc Dichromate Coated Steel

Please see individual product page for further details.



### Operating Specifications

- Bowl Capacity:** 5 oz. or 8 oz.
- Maximum Pressure Ratings:**
  - Metal Bowl: 250 PSI
  - Polycarbonate Bowl: 150 PSI
- Temperature Ratings:**
  - Metal Bowls: 0-200°F
  - Polycarbonate Bowls: 0-120°F

### Features

- Filter, regulator and lubricator consolidated into one assembly
- Polycarbonate or aluminum bowls available
- Manual, float or impulse drains available
- Gauge included
- Tie-rod construction for maximum stability

### Ordering Information

213-1000-2

Bowl Capacity	
5 oz.	2
8 oz.	1

Pipe Size	
1/4"	2
3/8"	3
1/2"	4

Bowl Type	
Polycarbonate	0
Polycarbonate w/ Guard	1
Metal	2
Metal w/ Sight Level	3

Elements	
20 Micron	0
10 Micron	1
3 Micron	2

#### OPTIONS

Anodizing	
None (Standard)	Blank
Blue	A1
Black	A2
Clear	A3
Green	A4
Red	A5
Yellow	A6
Gold	A7
Purple	A8
Drain	
Manual (Standard)	Blank
Impulse	D
Float	F
Seals	
Buna-N (Standard)	Blank
Fluorocarbon	V
Attachment Part	
Bracket	B
Knob	K

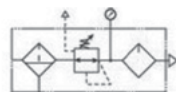
FILTER/REGULATOR/LUBRICATORS: C3-1000/2000



### Components

- Filter/Regulator:** C01-1000 /2000
- Lubricator:** 304-1000 /2000
- Nipple:** Zinc Dichromate Coated Steel

Please see individual product pages for further details.



### Operating Specifications

- Bowl Capacity:** 5 oz. or 8 oz.
- Maximum Pressure Ratings:**
  - Metal Bowl: 250 PSI
  - Polycarbonate Bowl: 150 PSI
- Temperature Ratings:**
  - Metal Bowls: 0-200°F
  - Polycarbonate Bowls: 0-120°F

### Features

- Filter/regulator and lubricator consolidated into one assembly
- Polycarbonate or aluminum bowls available
- Manual, float or impulse drains available
- Gauge included
- 10-130 PSIG spring

### Ordering Information

C3-2000-2

Bowl Capacity	
5 oz.	2
8 oz.	1

Pipe Size	
1/4"	2
3/8"	3
1/2"	4

Bowl Type	
Polycarbonate	0
Polycarbonate w/ Guard	1
Metal	2
Metal w/ Sight Level	3

Elements	
20 Micron	0
10 Micron	1
3 Micron	2

#### OPTIONS

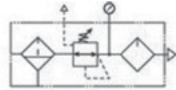
Anodizing	
None (Standard)	Blank
Blue	A1
Black	A2
Clear	A3
Green	A4
Red	A5
Yellow	A6
Gold	A7
Purple	A8
Drain	
Manual (Standard)	Blank
Impulse	D
Float	F
Seals	
Buna-N (Standard)	Blank
Fluorocarbon	V
Attachment Part	
Bracket	B



## Components

**Filter:** B05-1000  
**Lubricator:** 305-3000  
**Nipple:** Zinc Dichromate Coated Steel

Please see individual product pages for further details.



## Operating Specifications

- Bowl Capacity:** 8 oz.
- Maximum Pressure Ratings:**
  - Metal Bowl: 250 PSI
  - Polycarbonate Bowl: 150 PSI
- Temperature Ratings:**
  - Metal Bowls: 0-200°F
  - Polycarbonate Bowls: 0-120°F

## Features

- Filter, regulator and lubricator consolidated into one assembly
- Gauge included
- Push to lock bonnet assembly
- Black anodized finish standard
- Polycarbonate or aluminum bowls available
- Reduces footprint of air prep assembly
- Manual, float or impulse drains available
- Threaded bowls for ease of maintenance

## Ordering Information

### B3-1000-2

Bowl Type	
Polycarbonate	0
Polycarbonate w/ Bowl Guard	1
Metal	2
Metal w/ Sight Levels	3

Pipe Size	
1/4"	2
3/8"	3
1/2"	4

Elements	
20 Micron	0
10 Micron	1
3 Micron	2

#### OPTIONS

Anodizing	
None (Standard)	Blank
Blue	A1
Black	A2
Clear	A3
Green	A4
Red	A5
Yellow	A6
Gold	A7
Purple	A8
Drain	
Manual (Standard)	Blank
Impulse	D
Float	F
Seals	
Buna-N (Standard)	Blank
Fluorocarbon	V
Attachment Part	
Bracket	B

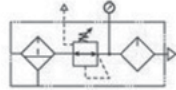
# FILTER REGULATOR/LUBRICATORS: FRL-1000



## Components

**Filter:** 205-1000  
**Regulator:** 104-1000  
**Lubricator:** 305-1000  
**Nipple:** Zinc Dichromate Coated Steel

Please see individual product pages for further details.



## Operating Specifications

- Bowl Capacity:** 8 oz.
- Maximum Pressure Ratings:**
  - Metal Bowl: 250 PSI
  - Polycarbonate Bowl: 150 PSI
- Temperature Ratings:**
  - Metal Bowls: 0-200°F
  - Polycarbonate Bowls: 0-120°F

## Features

- Filter, regulator and lubricator consolidated into one assembly
- Polycarbonate or aluminum bowls available
- Reduces footprint of air prep assembly
- Manual, float or impulse drains available
- Gauge included
- Threaded bowls for ease of maintenance

## Ordering Information

### FRL-1000-2

Bowl Type	
Polycarbonate	0
Polycarbonate w/ Bowl Guard	1
Metal	2
Metal w/ Sight Levels	3

Pipe Size	
1/4"	2
3/8"	3
1/2"	4

Elements	
20 Micron	0
10 Micron	1
3 Micron	2

#### OPTIONS

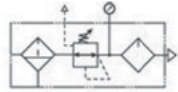
Anodizing	
None (Standard)	Blank
Blue	A1
Black	A2
Clear	A3
Green	A4
Red	A5
Yellow	A6
Gold	A7
Purple	A8
Drain	
Manual (Standard)	Blank
Impulse	D
Float	F
Seals	
Buna-N (Standard)	Blank
Fluorocarbon	V
Attachment Part	
Bracket	B
Knob	K



## Components

**Filter:** 201-5000  
**Regulator:** 116-5000  
**Lubricator:** 303-5000  
**Nipple:** Zinc Dichromate Coated Steel

Please see individual product pages for further details.



## Operating Specifications

**Bowl Capacity:** 21 oz.  
**Maximum Pressure Ratings:**  
 - Metal Bowl: 250 PSI  
 - Polycarbonate Bowl: 150 PSI  
**Temperature Ratings:**  
 - Metal Bowls: 0-200°F  
 - Polycarbonate Bowls: 0-120°F

## Features

- Filter, regulator and lubricator consolidated into one assembly
- Polycarbonate or aluminum bowls available
- Manual, float or impulse drains available
- Gauge included

## Ordering Information

# 213-5000-6

Bowl Type	
Polycarbonate	0
Polycarbonate w/ Bowl Guard	1
Metal	2
Metal w/ Sight Levels	3

Pipe Size	
3/4"	6
1"	8

Elements	
20 Micron	0
10 Micron	1
3 Micron	2

OPTIONS	
Anodizing	
None (Standard)	Blank
Blue	A1
Black	A2
Clear	A3
Green	A4
Red	A5
Yellow	A6
Gold	A7
Purple	A8
Drain	
Manual (Standard)	Blank
Impulse	D
Float	F
Seals	
Buna-N (Standard)	Blank
Fluorocarbon	V
Attachment Part	
Bracket	B
Knob	K

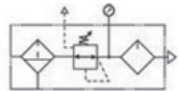
# FILTER/REGULATOR/LUBRICATORS: 213-4000



## Components

**Filter:** 201-4000  
**Regulator:** 116-4000  
**Lubricator:** 303-4000  
**Nipple:** Zinc Dichromate Coated Steel

Please see individual product pages for further details.



## Operating Specifications

**Bowl Capacity:** 32 oz.  
**Maximum Pressure Ratings:**  
 - Metal Bowl: 250 PSI  
 - Polycarbonate Bowl: 150 PSI  
**Temperature Ratings:**  
 - Metal Bowls: 0-200°F  
 - Polycarbonate Bowls: 0-120°F

## Features

- Filter, regulator and lubricator consolidated into one assembly
- Polycarbonate or aluminum bowls available
- Manual, float or impulse drains available
- Gauge included

## Ordering Information

# 213-4000-8

Bowl Type	
Polycarbonate	0
Polycarbonate w/ Bowl Guard	1
Metal	2
Metal w/ Sight Levels	3

Pipe Size	
3/4"	6
1"	8
1'-1/4"	10
1'-1/2"	12

Elements	
20 Micron	0
10 Micron	1
100 Micron	3

OPTIONS	
Anodizing	
None (Standard)	Blank
Blue	A1
Black	A2
Clear	A3
Green	A4
Red	A5
Yellow	A6
Gold	A7
Purple	A8
Drain	
Manual (Standard)	Blank
Impulse	D
Float	F
Seals	
Buna-N (Standard)	Blank
Fluorocarbon	V
Attachment Part	
Bracket	B
Knob	K