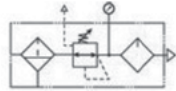




Components

- Filter:** 204-3000
- Regulator:** 101-3000
- Lubricator:** 305-3000
- Nipple:** Zinc Dichromate Coated Steel

Please see individual product pages for further details.



Operating Specifications

- Bowl Capacity:** 1 oz.
- Maximum Pressure Ratings:**
 - Metal Bowl: 250 PSI
 - Polycarbonate Bowl: 150 PSI
- Temperature Ratings:**
 - Metal Bowls: 0-200°F
 - Polycarbonate Bowls: 0-120°F

Features

- Filter, regulator and lubricator consolidated into one assembly
- Polycarbonate or aluminum bowls available
- Manual or impulse drains available
- Gauge included
- High flow and low flow lubricator options
- 10-130 PSIG spring

Ordering Information

213-3000-2

Bowl Type	
Polycarbonate	0
Polycarbonate w/ Bowl Guard	1
Metal	2

Pipe Size	
1/8"	1
1/4"	2

Lubricator Flow	
High Flow	0
Low Flow	5

Elements	
20 Micron	0
10 Micron	1
3 Micron	2

OPTIONS

Anodizing	
None (Standard)	Blank
Blue	A1
Black	A2
Clear	A3
Green	A4
Red	A5
Yellow	A6
Gold	A7
Purple	A8

Drain	
Manual (Standard)	Blank
Impulse	D

Seals	
Buna-N (Standard)	Blank
Fluorocarbon	V

Attachment Part	
Bracket	B

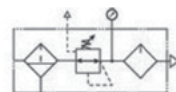
MINIATURE FILTER/REGULATOR/LUBRICATORS: B3-3000



Components

- Filter/Regulator:** B01/C01-3000
- Lubricator:** 305-3000
- Nipple:** Zinc Dichromate Coated Steel

Please see individual product pages for further details.



Operating Specifications

- Bowl Capacity:** 1 oz.
- Maximum Pressure Ratings:**
 - Metal Bowl: 250 PSI
 - Polycarbonate Bowl: 150 PSI
- Temperature Ratings:**
 - Metal Bowls: 0-200°F
 - Polycarbonate Bowls: 0-120°F

Features

- Filter/regulator and lubricator consolidated into one assembly
- Reduces footprint of air prep assembly
- Polycarbonate or aluminum bonnets available
- Polycarbonate or aluminum bowls available
- Manual or impulse drains available
- Gauge included
- High flow and low flow lubricator options
- 10-130 PSIG spring

Ordering Information

B3-3000-2

Bonnet	
Polycarbonate	B
Aluminum	C

Pipe Size	
1/8"	1
1/4"	2

Bowl Type	
Polycarbonate	0
Polycarbonate w/ Bowl Guard	1
Metal	2

Lubricator Flow	
High Flow	0
Low Flow	5

Elements	
20 Micron	0
10 Micron	1
3 Micron	2

OPTIONS

Anodizing	
None (Standard)	Blank
Blue	A1
Black	A2
Clear	A3
Green	A4
Red	A5
Yellow	A6
Gold	A7
Purple	A8

Drain	
Manual (Standard)	Blank
Impulse	D

Seals	
Buna-N (Standard)	Blank
Fluorocarbon	V

Attachment Part	
Bracket	B
Knob	K